

# PADEL

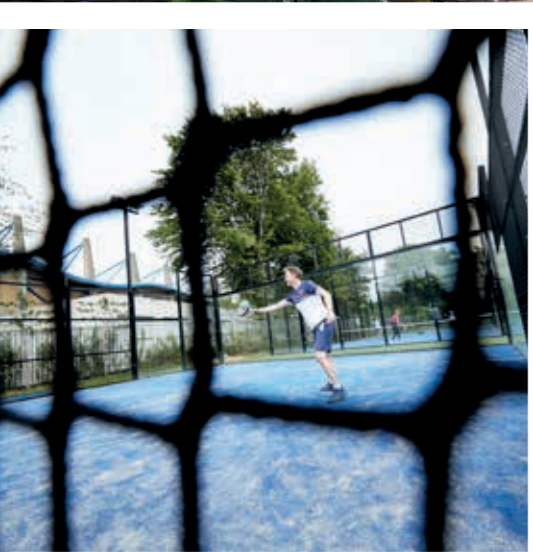
*It's a hit!*





## PASSION FOR PADEL

We understand why padel is growing so enormously worldwide. Padel is a great racket sport. It is a dynamic, interactive and tactical game in which everyone can unleash their energy. At any level. We were introduced to the sport in Spain in 2003 and have set our hearts on it. The number of courts is increasing rapidly, and we see more and more enthusiastic players sharing the same passion. We are happy to help the sport grow further and do this by building padel courts. This brochure introduces the padel courts supplied by Orange Padel International in more detail.



## OUR PADEL COURTS

Orange Padel International offers high-quality padel courts that amply meet the latest quality requirements. Each project starts with a preliminary study, after which we provide the best advice based on wishes and possibilities. We value this greatly. All courts are safe and sustainable. This quality is reflected in the robust materials and attractive appearance. It guarantees the long-lasting joy of playing. A complete court is also surprisingly affordable.

All Orange Padel International courts are delivered according to the LTA and KIWA ISA Sports quality mark.



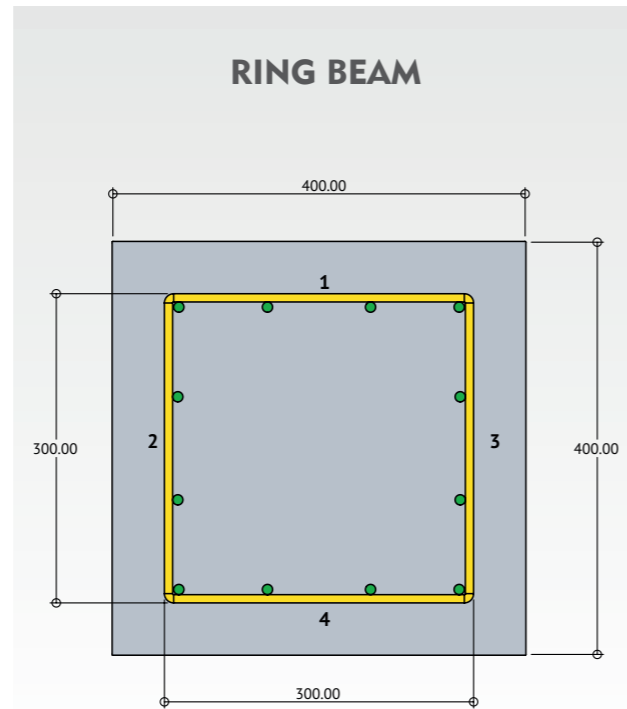
*The best base*

# THOROUGH GROUNDWORK

The subsurface is analysed in each situation. Once the foundation of sand and drainage is in order, a paving layer can be applied on top of it. Depending on the situation, the best solution is examined, considering the soil composition, purchase price and depreciation.

## RING BEAM

Orange Padel International has developed its own ring beam, especially for padel courts. It consists of robust metal reinforcement and concrete, supporting the cage construction effortlessly under the most extreme conditions. A carefree foundation is the best basis for optimal use.



*A superb top layer*

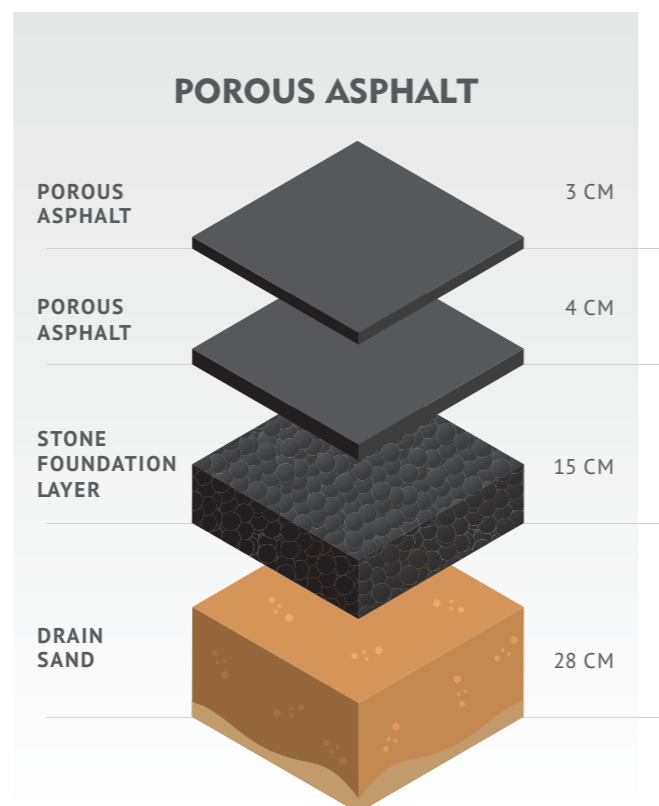
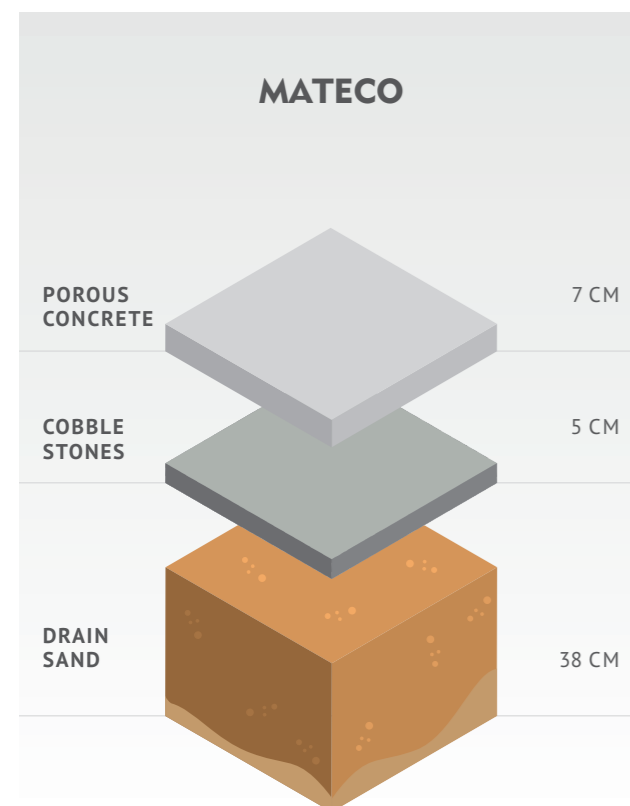
# THE ARTIFICIAL GRASS GRADE IS CRUCIAL

The top layer has a significant influence on the joy of playing. The artificial grass is UV resistant, made of very high-quality materials, and gloriously approved by KIWA ISA Sport. We recommend opting for blue artificial grass. Padel is a fast sport, and the contrast with the yellow ball is optimal with this colour. The artificial grass can also be supplied in red or green upon request.

## THE FINISH

The lines are cut into the artificial grass after laying the pitch. By applying this technique, the lines will not affect the game. Next, special sand is brushed in and evenly distributed over the pitch. Every detail contributes to making the padel experience as best as possible.

## AVAILABLE COLORS





*Extremely strong*

## THE CONSTRUCTION OF OUR COURTS

Glass is one of the most discussed items at padel courts, as safety is paramount. Our courts are always constructed of 10 mm or 12 mm laminated glass. The glass edges are polished 1 mm all around leaving no sharp edges. The screw holes are pre-drilled, polished and countersunk.

High-quality, galvanised steel is used for all types of courts. In the production process, the frames are welded and fitted with steel mats. This creates standalone frames, provided with base plates. Mounting the frames together provides an extra strong construction. We

deliberately choose this high-quality steel cage as it makes the courts much more durable than other constructions.

After that, the steel is coated. The pre-treatment, coating type and layer thickness significantly influence the shelf life. Using a high-quality powder coating ensures that the courts remain well protected under all circumstances.

The coating can be applied in any desired RAL colour. Did you know that a coating can positively influence the game?





*Our star seller*

# SUPREME

Latest generation hybrid padel court, extremely strong due to the unique combination of the construction of frames and pillars.

The full structure is manufactured with galvanized steel materials. The Supreme courts is therefore the perfect choice for any climate, as well for indoor, semi-covered and outdoor usage.

## SPECIFICATIONS

Galvanised metal hybrid frame/pillar system made of structural tube 100 x 60 mm.

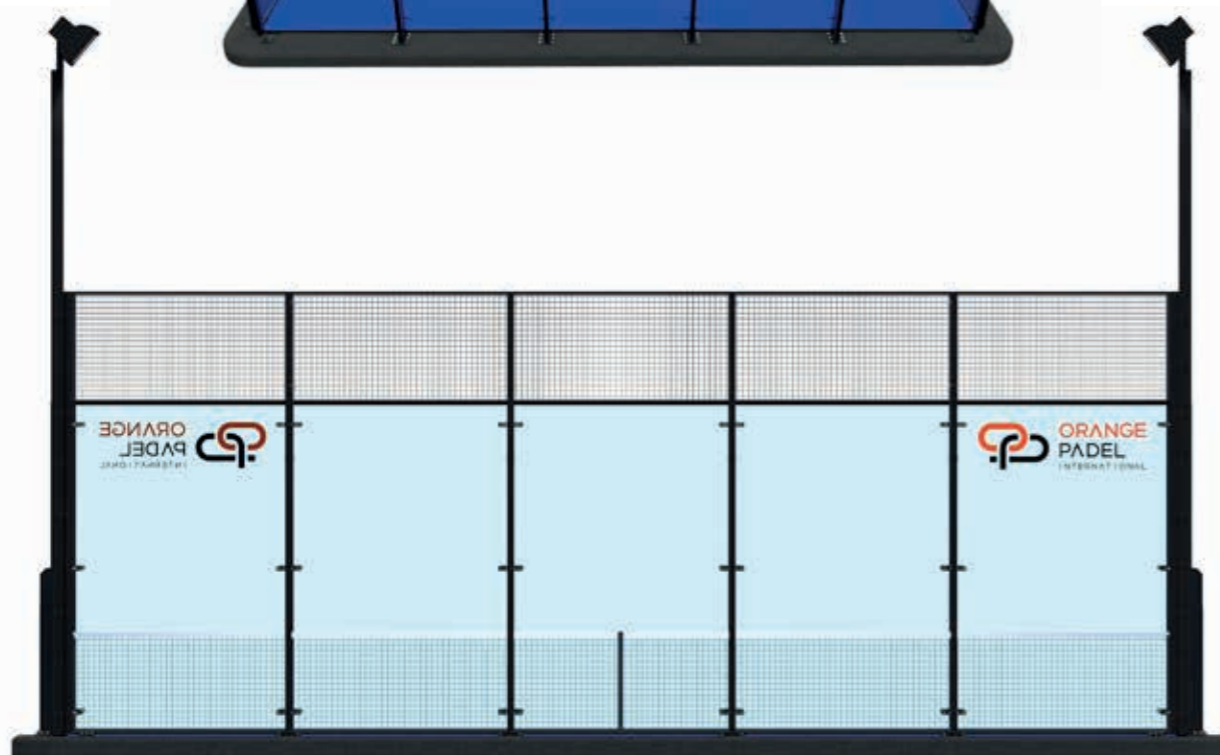
Structural air flow and drainage system to prevent humidity and corrosion

Kiwa certified and NOC-NSF approved court

Laser shape cutting and electro-welded mesh

Complies with all regulations of FIP (International Padel Federation) and the World Padel Tour.

Specials designed structure for the most severe outdoor conditions



*A sustainable choice for guaranteed sports pleasure!*



*Extraordinary visibility*

# SUPREME PANORAMA

Robust strong KIWA approved panorama court with spectacular view for spectators and players. Unique state of the art design, engineered to meet all today's requirements and beyond. Extra strengthened steel structure with electro-welded, robotized steel mesh.

## SPECIFICATIONS

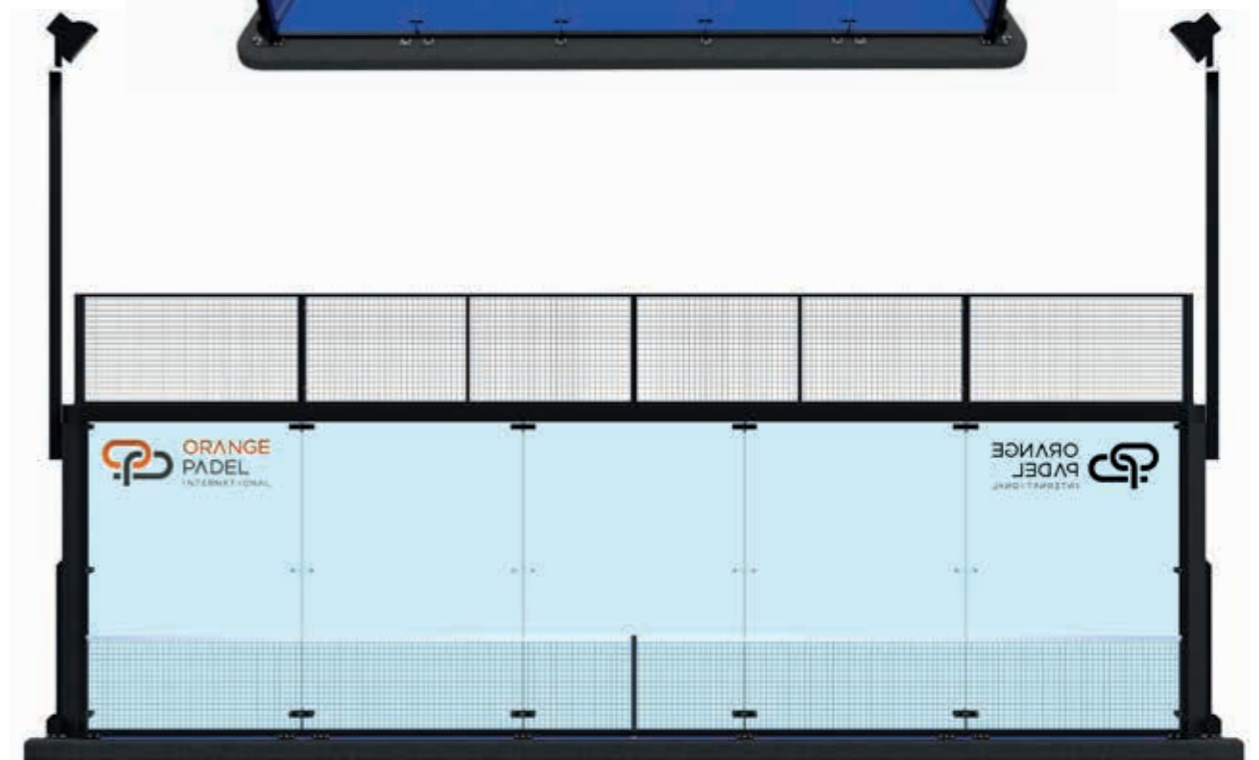
Galvanized metal hybrid frame / pillar system made of structural tube 160 x 160 mm

Structure Panoramic sides and bottom in 3 mts. glass

Structural air flow and drainage to prevent humidity and corrosion

Complies with all regulations of FIP (International Padel Federation) and the World Padel Tour

Anti-injury system and tempered safety glass of 12mm



*Visibly enjoying the sport*

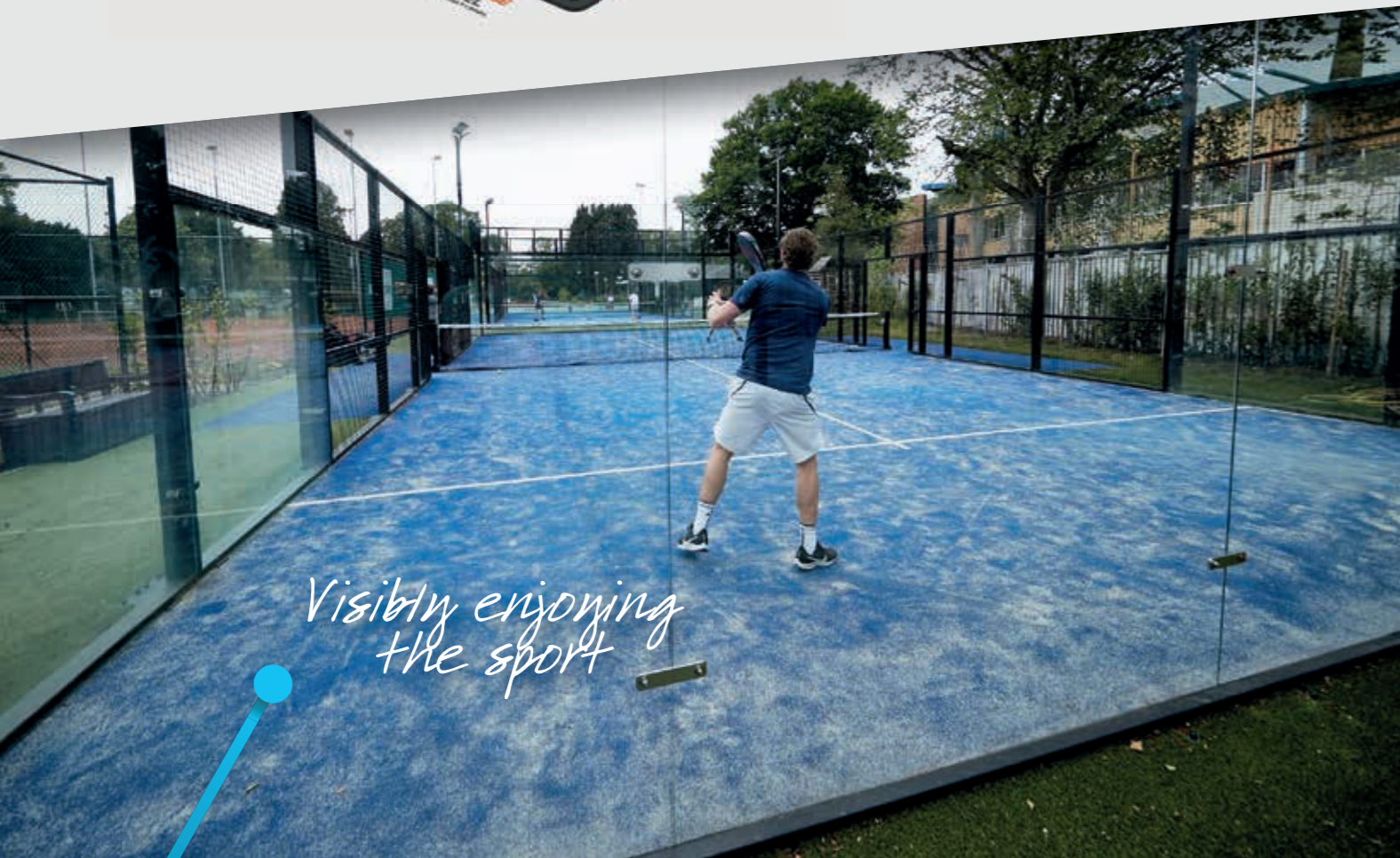
*Our global player*

# ULTIMATE

Main stream, very durable and rigid padel court. Orange Padel Ultimate is ideal for the international market due to its strength, easy assembly, low maintenance and very logistically efficient for shipping by sea and road. The full structure is manufactured of premium quality galvanized steel.

## SPECIFICATIONS

- Galvanised, laser-cut metal structural tubes of 100 x 60 mm
- Structural air flow and drainage to prevent humidity and corrosion
- Complies with all regulations of FIP (International Padel Federation) and the World Padel Tour
- Laser shape cutting and electro-welded mesh
- World Padel Tour type open entrances
- Customize options according client's requirements



*Visibly enjoying the sport*





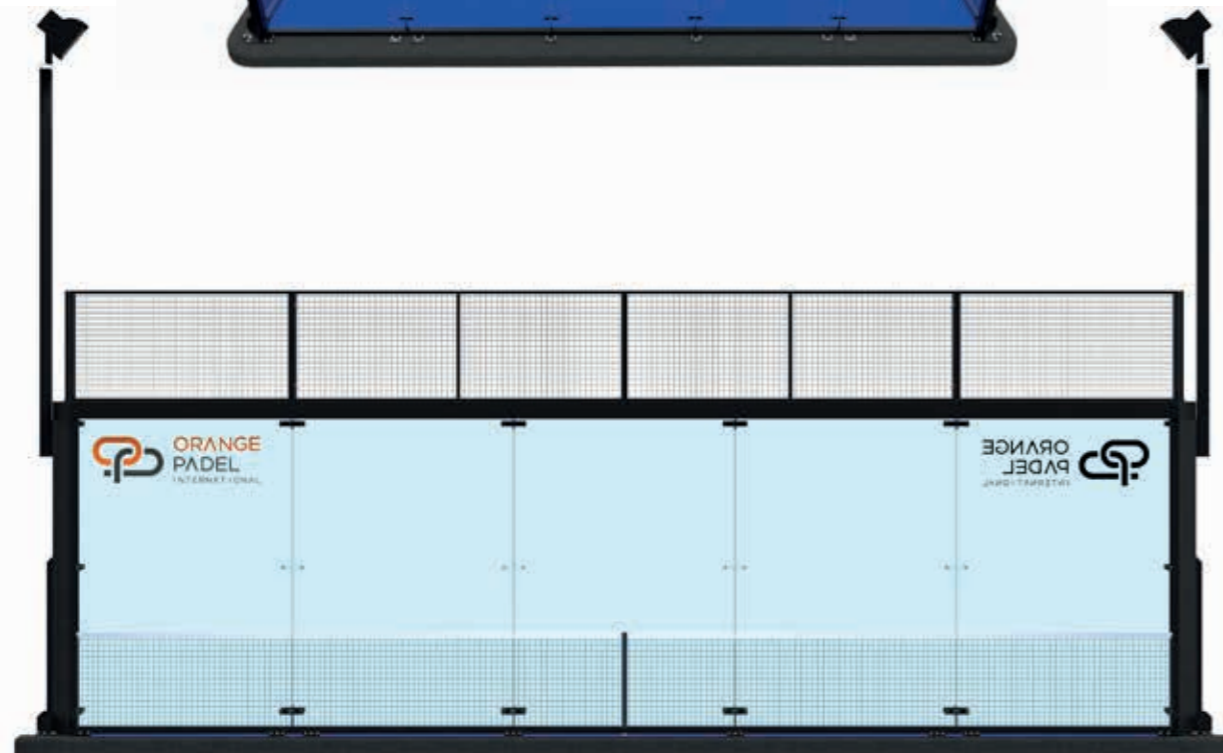
*A real eyecatcher*

# ULTIMATE PANORAMA

This Pano Ultimate has its full panoramic court backsides made on 12mm tempered glass offering a perfect visualization for the spectator as well as giving the player a great feeling of a wide space. The court can be used indoor and outdoor and is the perfect choice for national and international clubs, a real eyecatcher for center court locations.

## SPECIFICATIONS

- Galvanised, laser-cut metal structural tubes of 100 x 60 mm.
- Structural air flow and drainage to prevent humidity and corrosion
- Laser shape cutting and electro-welded mesh-
- World Padel Tour type open entrances
- Complies with all regulations of FIP (International Padel Federation) and the World Padel Tour.
- Customize options according client's requirements



*A sustainable choice for guaranteed sports pleasure!*



## INDOOR

Padel is also played indoors. The number of indoor courts is growing rapidly. No weather influences, and always playing under the same conditions. This calls for other constructions. Would you like to know more? We will gladly explain the possibilities to you!

## SINGLE COURT

Padel is usually played with four people, but our single court allows you to play single games. The track is narrower, namely 20 by 6 meters. This court has the same high quality and is just as sustainable as all others.



## QUALITY FINISHING

### LIGHTING

From a sustainability perspective, LED lighting has become the standard. We mount two luminaires in each mast so that the track is evenly lit everywhere. Another option is gooseneck lighting, which is adjustable. The lighting can be controlled in various ways: standalone, via an App or connected to the existing system. Lighting often comes with the commonly necessary additional measures and a permit requirement. We can support you with these.

### THE NET

The net is made of knotless polypropylene. The wire thickness is 4 mm, and the mesh size is 45 mm. The net is black and the tape is white. It can be personalised by screen printing.



## EXTRAS

We have an eye for detail. The following applies to all courts:

- Laser cut logo in the uprights (design upon agreement)
- All courts can be finished in any desired RAL colour
- Stainless steel bolts and nuts for the A4/316 outdoor finishings
- Stainless steel bolts and nuts for the A2/304 indoor finishings
- Anti-injury glass construction finishing
- Frames with reinforced base plate for extra durability
- Neoprene protection between glass and steel construction
- Very tight transition from steel mat to glass, rendering no effect on play
- Maintenance contract

We can provide the following options:

- Matching court benches and scoreboards
- Gooseneck lighting
- Lighting power supply installation
- Ball catchers
- Maintenance materials such as sweeping brooms, rubber rakes and nets



Distributor of Orange Padel  
courts within the UK Market:  
Surftech Surfaces Ltd  
01284 336300

[www.surf-tech.net/](http://www.surf-tech.net/)  
[info@surf-tech.net](mailto:info@surf-tech.net)

